

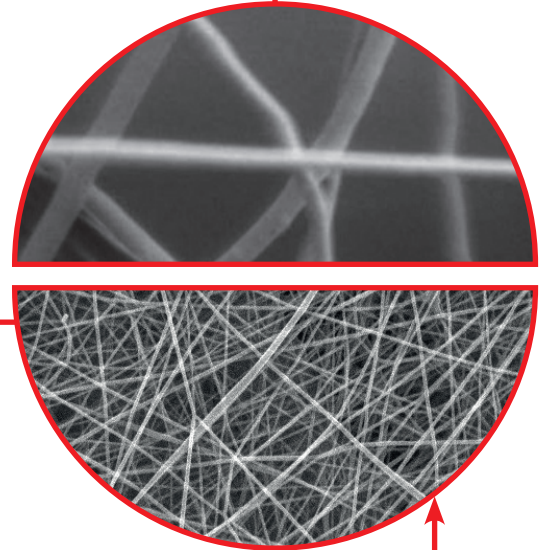
# NANO FIBER MASK B



**Virus and Bacteria Filtration**



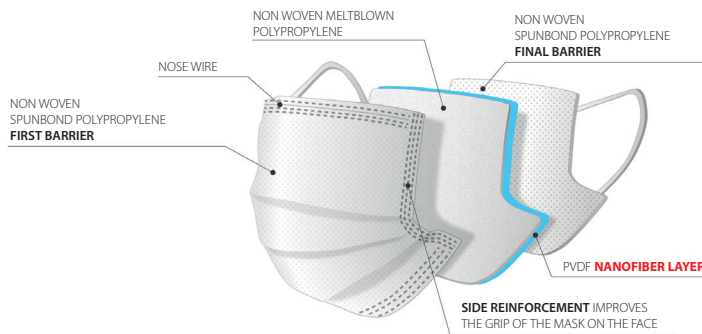
**Regular Mask**



## Why to prefer our medical face mask with nano-fiber over the traditional melt-blown mask:

- X** Regular mask (3 layers) with 1 melt-blown filtration layer may block fewer than 50% of particles with virus
- ✓** NANO fiber mask with 2 active filtration layers (1 nano layer) provides extended protection

### Nanofiber Mask - Protection against viruses



- 1. PROTECTION** = more efficient trapping of particles and virus (Bacterial filtration efficiency (BFE)  $\geq$  98%)
  - ✓ Mechanically due to the higher density of nano-fibers inside the filter (thousands of fibers in 1 sq.cm)
  - ✓ Electrically as the virus particles are statically attracted to nano fibre layer and stopped
- 2. COMFORT** = improved comfort of wearing
  - ✓ Ultra-thin material ensures maximum breathability for easy breathing
  - ✓ Materials are suitable for sensitive skin
  - ✓ Fits perfectly to any shape of face
- 3. EUROPEAN** = high flexibility of supplies due to
  - ✓ EU production
  - ✓ EU raw material resources

